

STORM DRY[®]

MASONRY PROTECTION CREAM



When Masonry Gets Wet, It Gets Cold
...and cold walls mean cold buildings

Stormdry masonry protection cream

When masonry gets wet, it gets cold... and cold walls mean cold buildings as heat escapes much more readily.

Protect your home from penetrating damp and increase the thermal efficiency of masonry with Stormdry.

With its unique colourless cream formula, a simple one-coat application will protect brick, stone and concrete from rain penetration for 20-30 years, whilst allowing the masonry to breathe and retain its original looks and features.

The Problem - Wet Masonry

When walls get wet, their thermal resistance tumbles and valuable heat escapes. They become less effective at keeping heat in.

Even when cavity wall insulation is installed, damp bricks drastically reduce the thermal performance of the wall.

So what can be done?



The Solution – Stormdry

Stormdry prevents rain penetration and is scientifically proven to reduce heat loss in single skin masonry construction, with an energy saving of up to 29%*. All in one simple single coat application.

*University of Portsmouth

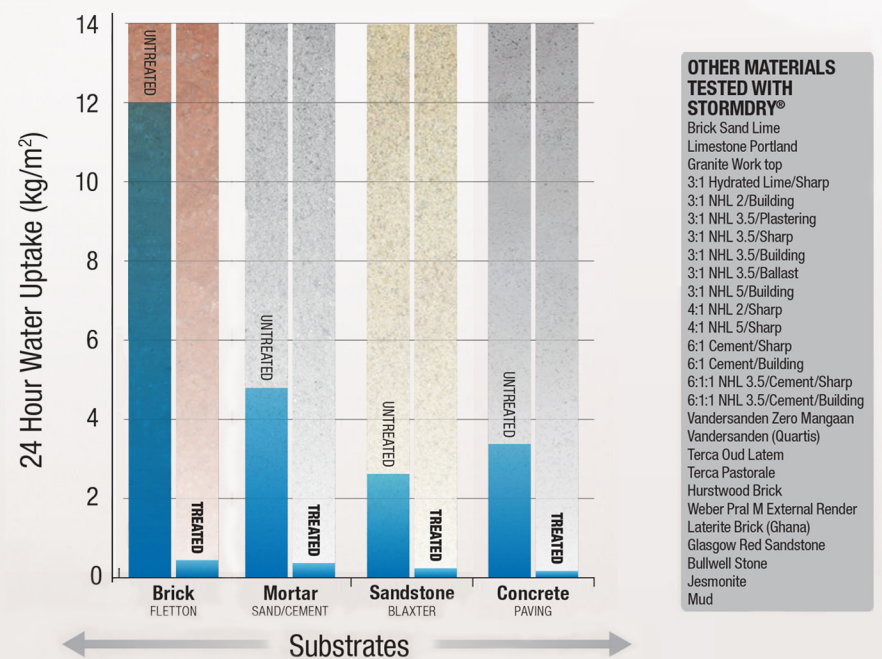
Stormdry is a colourless, breathable, water-repellent treatment for brick, concrete, and stone walls. It is supplied in the form of a deeply penetrating 'cream' that is applied to the wall surface in a single coat using a roller or brush. Once Stormdry has been applied it will permeate deeply into the masonry before curing to form a water-repellent barrier.



Tried and Tested on >50 Substrates

Stormdry® Masonry Protection Cream has been laboratory tested on a large range of different materials and has been proven to significantly reduce water absorption on more than 50 substrates. The graph below shows the reduction in water absorption rates, on common building materials, after treatment.

Graph Showing Water Uptake in Commonly Used Building Materials Before and After Treatment with Stormdry®



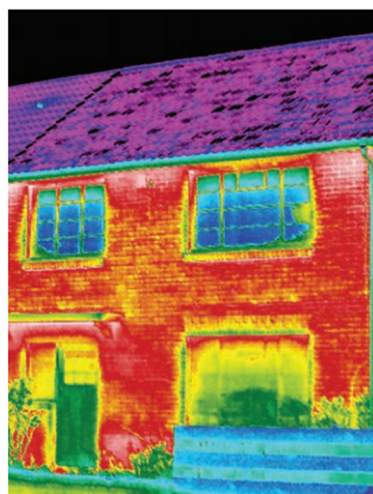
Improving the thermal performance of masonry

Permeable construction materials such as brick, stone, concrete, and mortar are worse insulators when they are wet; much in the same way as wet clothes feel cold.

Testwork carried out by the University of Portsmouth has shown that the treatment of brickwork with Stormdry reduces conductive heat loss by a factor of two. Tests on a model house treated with Stormdry show a 29% reduction in heating energy.

The energy and carbon savings made possible by Stormdry have now been independently verified in a study carried out by Giraffe Innovation environmental consultants. A copy of the report is available at www.stormdry.com.

All the laboratory tests, independent reports and field test data has been reviewed by the Energy Saving Trust and they have verified that a treatment of Stormdry inhibits the absorption of moisture and reduces heat loss through masonry walls.



Up to 35% of all heat loss on a building can occur through single skin walls.

Photo courtesy of iRed Ltd



Independent energy savings report from Giraffe Innovation.



Rigorous review of laboratory tests, independent reports and field test data has resulted in energy saving claims in relation to Stormdry Masonry Protection Cream being verified by the Energy Saving Trust.

Stormdry® Waterproofs Walls

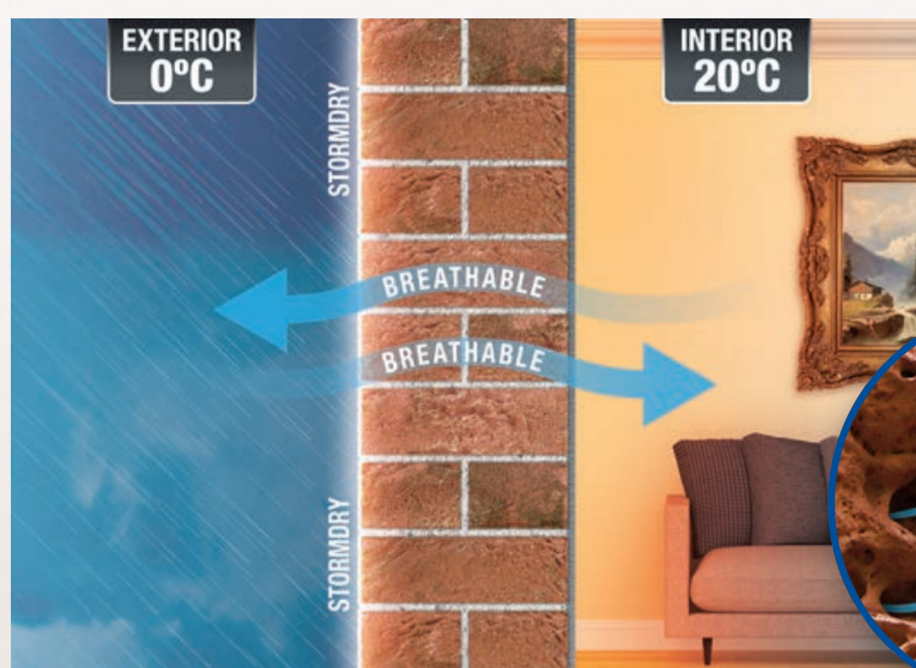
Stormdry® Masonry Protection Cream is a silane/siloxane cream emulsion. It is applied to brick, stone, render and masonry walls using a brush, roller or airless sprayer.

Once applied, the cream will absorb into and bond with the building materials, making them waterproof without changing their appearance.

The treated wall is still vapour-permeable, meaning damp walls can dry out and buildings are able to breathe.



A single coat of **Stormdry® Masonry Protection Cream** can protect walls from rain penetration for 25 years.

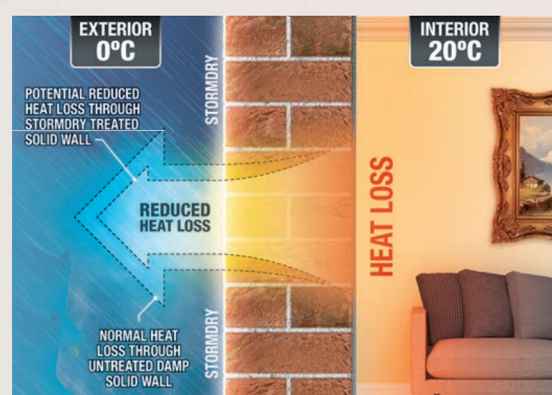


Allows Damp Walls to Dry Out

A **Stormdry®** treated wall is still breathable. It lines the pores of masonry materials, instead of blocking them. This means that even though the entry of liquid water is blocked, water vapour is able to freely pass through the wall, allowing any residual moisture to evaporate and the wall to dry out. This makes **Stormdry®** ideal for application in situations where it will aid the drying process, such as the protection of compromised cavity wall insulation.

A Wet Wall is a Cold Wall

Stormdry® Masonry Protection Cream stops rain penetrating external walls, keeping them warm and dry. The Energy Saving Trust has granted **Stormdry®** verified status, as high levels of moisture in the masonry, such as those in exposed locations, will lose heat faster than dry walls. Keeping walls dry by applying **Stormdry®** will maximise their thermal performance.



Stormdry

- 25 Year BBA Approved Masonry Protection
- Verified by the Energy Saving Trust as an energy saving method
- 25m² coverage (per 5 litre pack)
- Single coat application by brush, roller, powered roller or air spray
- Can be used on brick, stone and concrete
- Deeply penetrating
- Allows masonry to breathe naturally



Used on over 25,000 Homes in the UK

Since its launch, more than 25,000 homes have been treated using **Stormdry® Masonry Protection Cream**. The different types of property that have been treated range from small domestic properties to large residential buildings and even commercial projects.

The easy application, proven results and industry accreditations are all part of the reason why the **Stormdry®** range has become so popular. The wealth of successful case studies available is testament to its high-performance.



STORM DRY

Installed By



alexanderwatson.com.au

1/10-12 Kemble Court, Mitchell, ACT 2911

02 6181 2750

www.stormdry.com.au

Stormdry® is a Registered Trademark of Safeguard Europe Ltd. © Safeguard Europe Ltd 2019.

03/19

Benefits of Stormdry

- Easy to apply
- Provides water and rain repellency
- Reduces heat loss through masonry walls (verified the Energy Saving Trust)
- Single-coat application - saves time
- Easy to estimate quantity of product required - each litre treats 5m²
- Tested to BS EN ISO 15148:2002 on a wide range of substrates - including bricks, mortars, concrete, and sandstone
- UV resistant - BBA approved 25 year life expectancy
- Does not block pores - allows substrate to 'breathe naturally'
- Deeply penetrating - improves the effectiveness of the treatment by bridging small cracks and extends the life of the treatment
- Alkali resistant - can be applied over freshly pointed walls
- Manufactured in the UK under an ISO9001/14001 quality and environmental management system